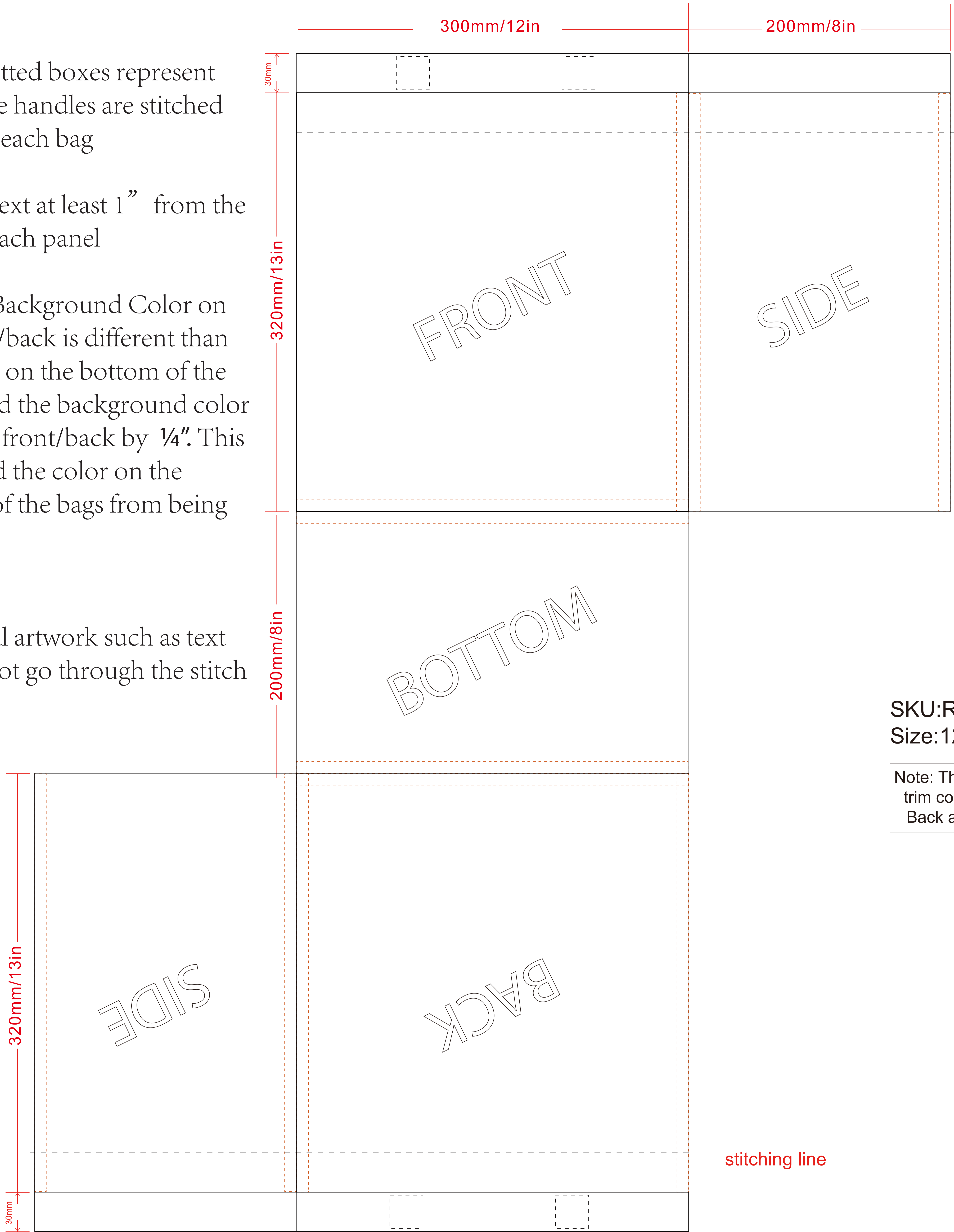


Template Guide:

1. The dotted boxes represent where the handles are stitched inside of each bag
2. Keep text at least 1" from the edge of each panel
3. If the Background Color on the front/back is different than the color on the bottom of the bag, bleed the background color from the front/back by 1/4". This will avoid the color on the bottom of the bags from being visible
4. Critical artwork such as text should not go through the stitch line.



SKU:RSB1
 Size:12"W*13"H*8"D
 Note: There will be 0.5" of trim covering the Front, Back and Side panels.

